

Fostering Hope Initiative Strategic Partners

Government, public, and private organizations joining together with a common goal:

Catholic Community Services	Lutheran Community Services Northwest	Oregon Department of Human Services
Center 50+	Mano a Mano Family Resource Center	Pacific Research & Evaluation
Child Care Resource and Referral of Marion, Polk, and Yamhill Counties	Marion County Health Department: Adult Behavioral Health, Alcohol, & Drug Treatment and Children's Behavioral Health	Polk Partners for Young Children
City of Salem	Marion-Polk Early Learning Hub, Inc.	Salem Leadership Foundation
City of Woodburn	Marion-Polk Food Share	Salem-Keizer Coalition for Equality
Community Action Agency	Mary Eyre Elementary	Swegle Elementary
Comunity Partners of East Salem, CaPES	New Hope Foursquare Church	Washington Elementary, Salem
Family Building Blocks	Northwest Human Services	Washington Elementary, Woodburn
Highland Elementary	Options Counseling and Family Services	Willamette Education Service District
Holy Cross Lutheran Church	Oregon Child Development Coalition	Yamhill County Health & Human Services
Independence Elementary		

2016-2017 Funding Partners

Dick & Gayle Withnell	Marion/Polk Early Learning Hub, Inc.
Dick Kreitzberg	Meyer Memorial Trust
Jim & Jane Kreitzberg	Northwest Health Foundation
East Salem Rotary	Salem Foundation Elmer E. Smith, Jr. Fund
Kaiser Permanente Community Fund	Salem Foundation
Lutheran Community Services NW	Tokarski Family
Oregon Department of Human Services	United Way of the Mid-Willamette Valley
March of Dimes Greater Oregon Chapter	Woodburn Rotary
	Yamhill Early Learning Hub

Fostering Hope Initiative

www.FosteringHopeInitiative.org

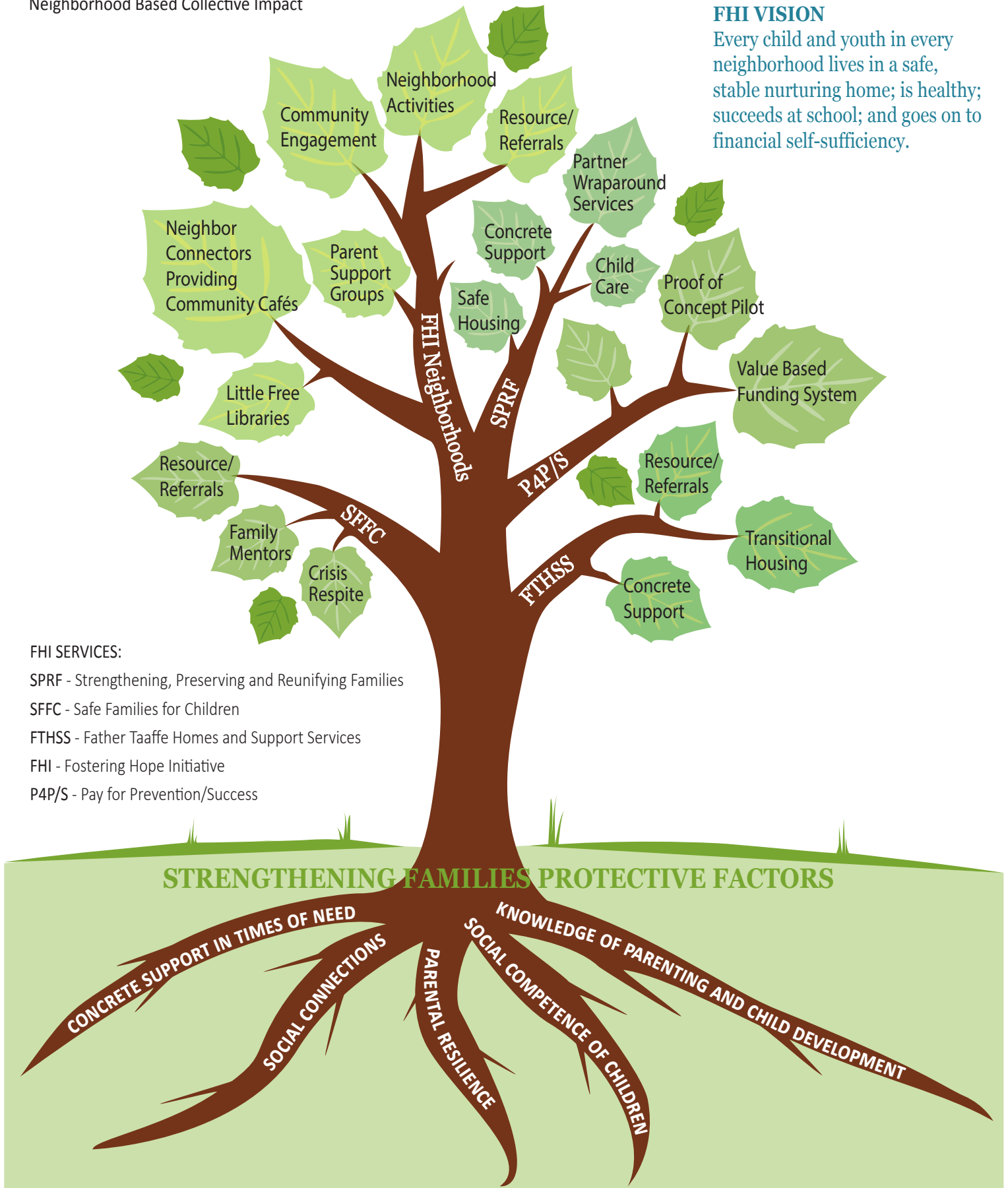
Katie Stubblefield, Fostering Hope Initiative Program Director | katiestubblefield@ccswv.org | 503-551-0619
Teri Alexander, Associate Director | talexander@ccswv.org | 503-485-8970
Kimberla Weaver, SPRF Coordinator | kweaver@ccswv.org | 503-385-3231

Fostering Hope Initiative

Neighborhood Based Collective Impact

FHI VISION

Every child and youth in every neighborhood lives in a safe, stable nurturing home; is healthy; succeeds at school; and goes on to financial self-sufficiency.



FHI SERVICES:

SPRF - Strengthening, Preserving and Reunifying Families

SFCC - Safe Families for Children

FTHSS - Father Taaffe Homes and Support Services

FHI - Fostering Hope Initiative

P4P/S - Pay for Prevention/Success